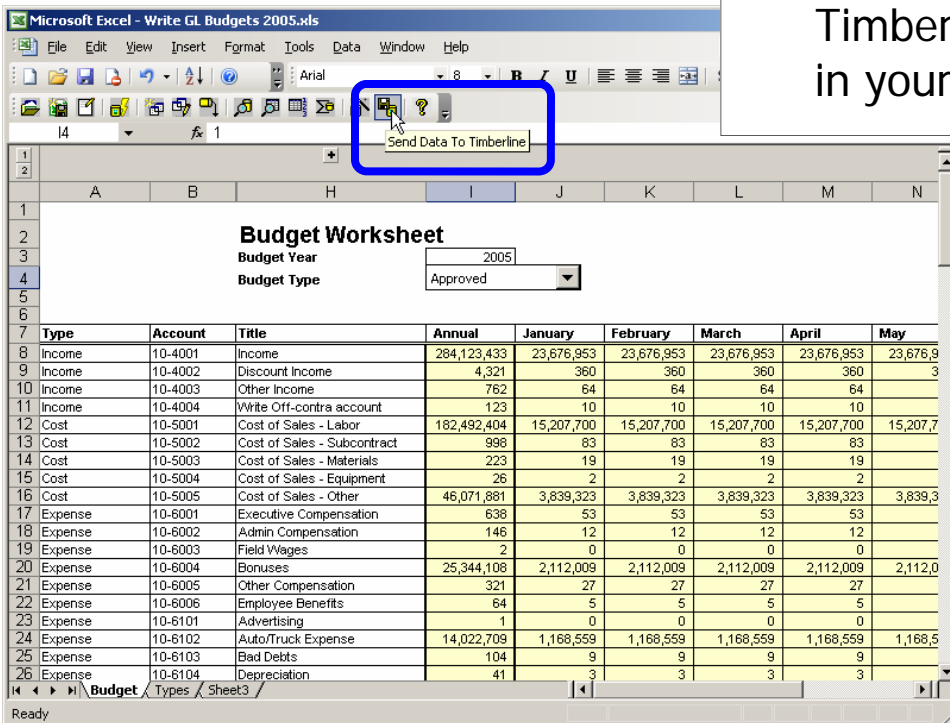




## Send Data to Timberline® Office from Excel

? What if you could quickly update Timberline Office data using data in your Excel workbooks?



- ✓ Budgets
- ✓ Vendors
- ✓ Customers
- ✓ Custom Fields
- ✓ Cost To Complete
- ✓ Pay Rates
- ✓ More...

Office Connector Write is an Excel Add-In that allows you to write data to your Timberline Office data quickly and easily. The Add-In places new menu items and toolbar buttons in Excel as well as new worksheet functions that you can use inside Excel formulas.

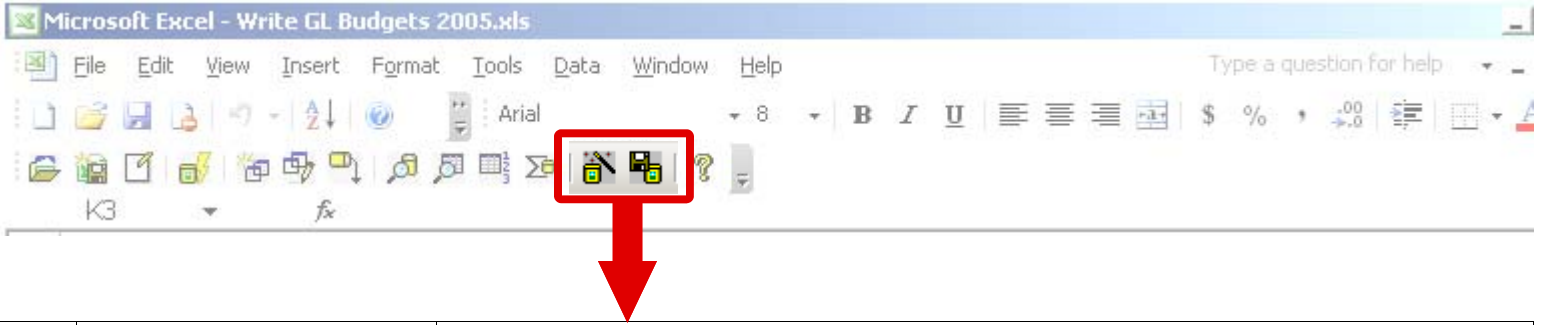
With Office Connector, you can seamlessly access your Timberline Office database from Excel. Office Connector automatically creates a connection to your database using Timberline Office's ODBC driver without the need for you to configure data sources or create queries.

Office Connector Write allows you to embed functions in your Excel worksheets that instruct Office Connector to write values from your worksheet to specific writeable records and fields in your database.

**Your data remains secure.** With the approval window, you maintain complete control at all times. The approval window gives you a preview of the information to be written before anything happens. In addition, you may use the Operator Administrator utility to identify the users who should have the ability to write data.

*Start developing entire spreadsheet solutions that work with your Timberline Office data today!*

# Office Connector Write Tools



	<b>Open Timberline Office Data Folder</b>	Allows the selection of the Timberline Office data folder that will be associated with the current workbook.
	<b>Write Wizard</b>	Displays a wizard that results in the creation of an Office Connector TSWrite function in the current cell. A TSWrite function acts as an instruction for data to be written to Timberline.
	<b>Send Data to Timberline</b>	Displays an approval window showing each of the pending write operations. You may selectively approve or decline each operation before proceeding to write the data.
	<b>Display Help</b>	Displays the Office Connector online help, which documents function syntax including examples.

## Capabilities

### Update Existing Records

Using Office Connector Write, you may update any field in the Timberline Office database that is designated as ODBC-writable. The Timberline ODBC driver prevents the updating of your financial data to ensure the integrity of your data. For a complete list of ODBC writeable fields, refer to the Timberline ODBC Help.

### Create New Records

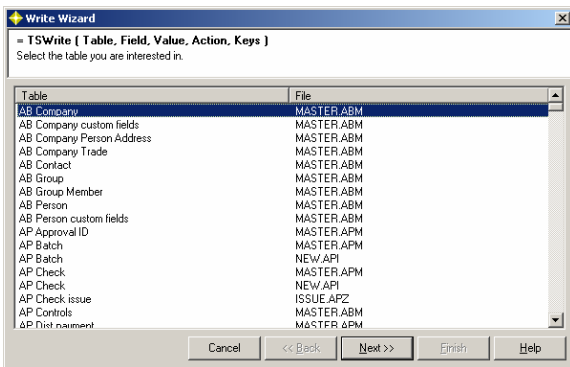
Where permitted by the Timberline ODBC driver, you may create new records in the Timberline Office database. For a complete list of record-types that can be created, refer to the Timberline ODBC Help.

### Audit Past Updates

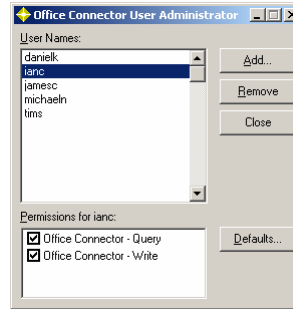
Each time Office Connector Write sends data to Timberline, a preview window is displayed that allows you to selectively accept or decline each update. Once the data has been written, a recap report is created, stored and displayed. This

## Wizard Driven

Office Connector's wizards make it easy to accomplish the tasks that you want.



## Security



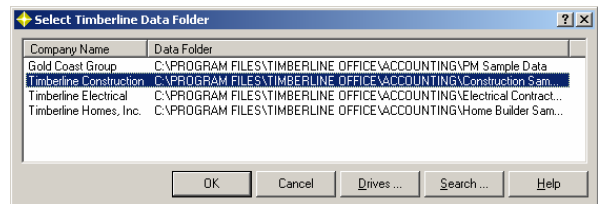
Each user of Office Connector Write must have a valid Timberline Operator ID and password in order to write data. In addition, you may utilize the User Administrator program to identify specific users that should have access to Office Connector Write.

## Licensing

Office Connector Write is licensed separately from Office Connector Query. Licensing is based on concurrent users.

## Easy Connectivity

Office Connector allows Excel to Connect with Timberline Office data and without the need for you to setup ODBC data sources or define queries!



## System Requirements

**Operating System:** Microsoft Windows 2000, XP or 2003 | **Microsoft Excel:** Microsoft Excel 97, 2000, 2002, XP or 2003 | **Timberline:** Timberline Office 7.x, 8.x or 9.x | Timberline Office ODBC Driver | All other system requirements as defined by Timberline



For sales or information, contact  
Accordant Company:

Phone: 973-887-8900  
Email: sales@accordantco.com  
Website: www.accordantco.com



3305 Main Street  
Suite 303  
Vancouver, Washington 98663  
(360) 567-3750 / fax (360) 567-3756  
Email: sales@event1software.com  
Website: www.event1software.com