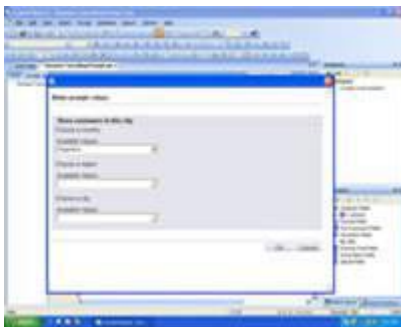


Powerful Crystal XI Report Development for Prolog

Crystal Reports XI for Prolog allows construction organizations to get the most out of Prolog reports by providing access to the enhanced capabilities of Crystal Reports XI (version 11). A world standard in enterprise reporting, Crystal Reports XI from Business Objects features new report formatting and design capabilities not available as part of Prolog's standard Report Manager. Today, Prolog users are provided with more than 400 customizable standard reports. With the addition of Crystal Reports XI for Prolog, project-driven organizations will be able to leverage deep report customization and development capabilities that are only available in Crystal Reports XI.

Crystal Reports XI for Prolog enables Prolog Manager (version 2008 or greater) and Prolog WebSite users to leverage the powerful report development and runtime capabilities of Crystal Reports XI Developer Edition—allowing users to view, edit and create new reports that provide valuable dashboard views on project key performance indicators.

Crystal Reports is an intuitive reporting solution that helps customers rapidly create flexible, feature-rich, high-fidelity reports that tightly integrate into web and Windows applications. If you want to supplement the existing capabilities of Prolog's Report Manager with a full report development environment, check out the expanded features that Crystal Reports XI for Prolog enables:

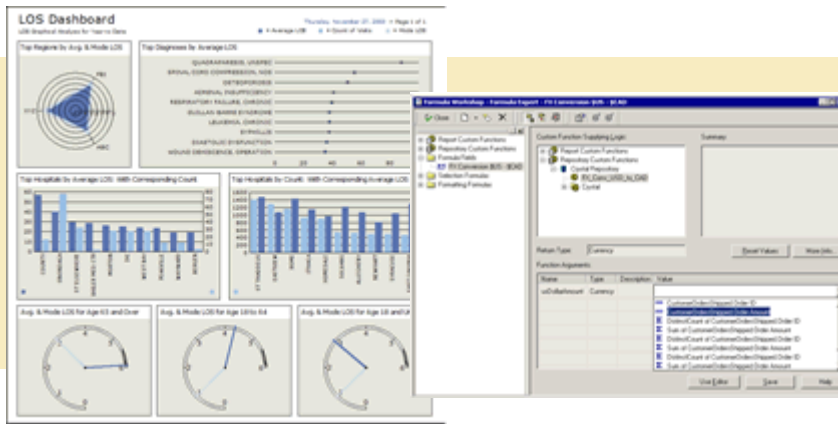


Base reports on dynamic values with the dynamic and cascading prompts feature.

Crystal Reports XI Formatting and Design

Feature	Advantage
Dynamic and Cascading Prompts	Base report prompts on dynamic values. You will no longer need to maintain static prompt value lists within individual reports because you can reuse existing prompts.
Dependency Checker	Use the dependency checker to instantly find broken links, formula errors, and dependency issues before reports are published and distributed.
Dynamic Image Location	Pictures and graphics can be placed in a report through a link in the database so that you no longer need to store images within the database.
Full Filtering and Grouping	Selectively view the information that's important to you.
Hierarchical Grouping	Users can create their reports in a hierarchical rather than just a relational manner. This provides a better fit for organizational charts and summary reports.
Visual Report Designer	Quickly design interactive reports using an intuitive, drag-and-drop interface and object-oriented explorers.
Experts and Wizards	Use optional experts and wizards to simplify common reporting tasks such as connecting to a data source, selecting, grouping, sorting, and summarizing data.

Increase the graphical impact of your reports by choosing from a wide variety of map and chart types.



A call-stack makes debugging data-level errors easy.

Any Report Type	Create virtually any report you need including cross-tab, conditional, top N/bottom N, summary/drill-down, form, mailing label, OLAP, and subreport.
Charting and Mapping	Increase the graphical impact of your reports by choosing from a wide variety of map and chart types, including bar/3D bar, pie/doughnut, line, gantt, gauge, funnel, XY scatter, ranged map, dot density map, and more.
Drag-and-drop Charting and Cross Tabs	For intelligent charting where Crystal Reports will select the best chart style based upon the data in your report. Chart design is faster and easier because charts will be automatically updated when new variables are added.
Customizable Templates	Spend less time formatting individual reports. Design and apply customized templates that specify standards in formatting and logic - including data access operations - to ensure design consistency across reports. You can even use existing reports as templates.
Powerful Formula Language	Use the extensive formula language in Crystal Reports with over 160 built-in and user-defined functions and operators to tightly control report formatting, complex logic, and data selection. A call-stack makes debugging data-level errors easy. A formula extractor and formula workshop are also included.
Custom Functions	Eliminate redundant formula creation. Extract business logic from formulas to create custom functions so you can use them across multiple reports.

System Requirements

Minimum: Intel Pentium 600 MHz or equivalent processor; Recommended: 1 GHz or higher.

Microsoft Windows 2003, XP (Service Pack 2 or later), 2000 (Home and Professional with Service Pack 4 or later)

Minimum 128 MB memory; Recommended: 256 MB.

The Crystal Reports XI for Prolog product requires 320 MB of free disk space.

If you wish to install Crystal Reports XI Developer, an additional 135 MB of free disk space is required.

Required Software

Prolog Manager or Prolog WebSite 2008 or greater.

Crystal Reports XI for Prolog is not compatible with any version of Prolog Manager or Website prior to 2008.

Business Requirements

Each organization wishing to run Crystal Reports XI Developer must purchase one named-user license of Crystal Reports XI for Prolog through Meridian. This entitles the company to one named-user license of Crystal Reports XI Developer.

Customers who purchase Support and Maintenance for Crystal Reports XI for Prolog are entitled to Technical Support and access to product patches and service packs. This does not include Crystal product upgrades.

All Support and Maintenance for Crystal Reports XI for Prolog will be provided by Meridian.

Prolog fixes, patches, and service packs related to Crystal Reports XI for Prolog provided by Meridian via SupportLink.