

What's New in Prolog 2008

Introducing Prolog 2008 – the latest upgrade to Prolog® software from Meridian Systems

Prolog is the industry standard for successful construction project delivery. In fact, Meridian solutions continue to be ranked as the market share leader for project management software by Constructech magazine,¹ and by the CFMA among general contractors larger than \$101 million in revenue.² Meridian customers on active customer support and maintenance agreements receive Prolog upgrades free of charge.

This 'What's New' document details some of the notable enhancements in the Prolog 2008 release, including improved usability, new features and customer driven enhancements that allow Prolog users to:

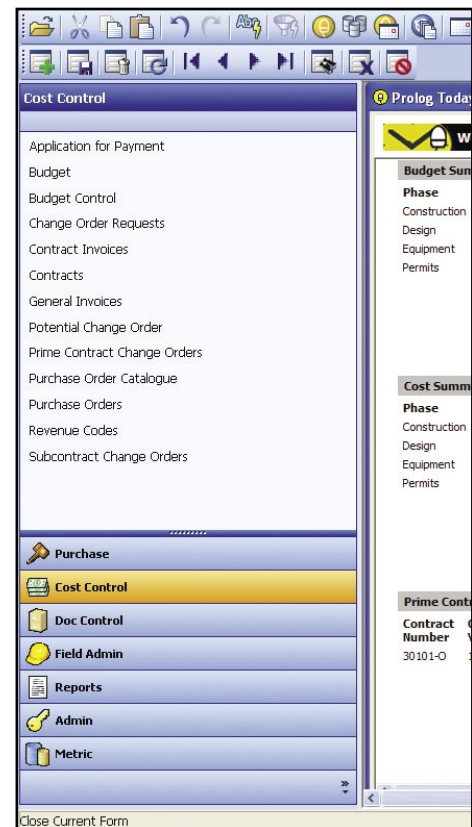
- › Optimize company performance
- › Reduce paperwork and review cycles on all project related documents
- › Manage escalating project complexity and program risk
- › Improve communication and collaboration

Performance, Usability & Security

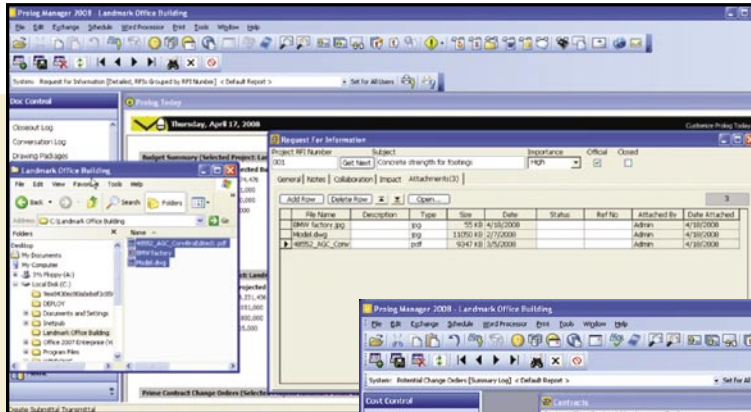
The first thing you'll notice is the refreshed and modern user interface that closely mimics one of the most universally-used programs – Microsoft Outlook. You will also see many additional customer driven enhancements that are designed to improve performance, usability and security.

By upgrading to Prolog 2008, you will also benefit from many other enhancements, including:

- › RFI 'drag & drop' file attachments
- › User-friendly duplicate Company Manager features
- › Default Crystal XI® reporting
- › Contract centric Potential Change Orders (PCO)
- › Improved List Group and Lookup Group data export
- › Enhanced security level attributes
- › Easy-to-access Contact and Company Lookup buttons
- › Ability to limit revisions to PCOs that are linked to other documents
- › Greater Quick Print reporting capability
- › Master Format 2004 expanded CSI code file format support
- › Advanced database performance and simplified archiving capability
- › More than 40 other customer driven enhancements

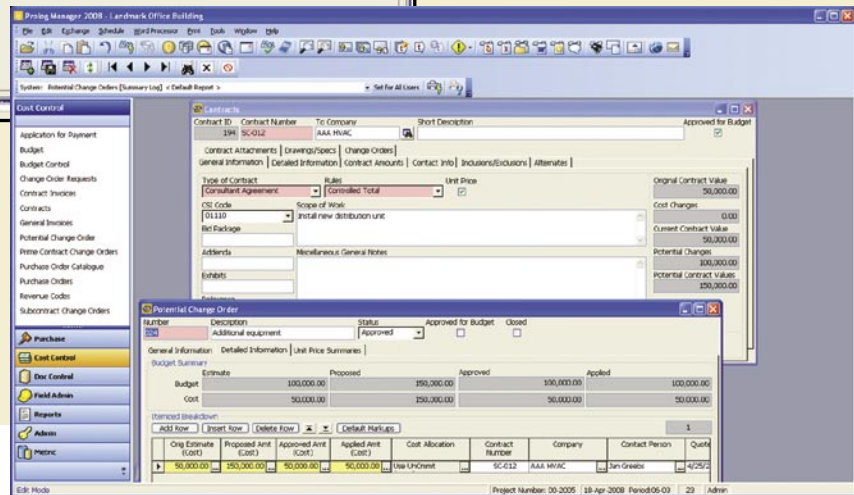


- ▲ Prolog 2008 has an updated user interface with an expandable and collapsible menu design, and new navigation bar with larger, easier-to-understand icons.



▲ Quickly and easily attach files to RFIs with drag & drop functionality.

▼ Directly link PCO line items to specific contracts.



Updated User Interface

The Prolog user interface has been updated with many new features. The traditional switchboard has been replaced with an expandable and collapsible menu that mimics Microsoft Outlook. The Prolog navigation bar has also been updated with larger, easier-to-understand icons. And, users continue to have the ability to organize the interface to best suit their business needs.

Drag & Drop RFIs

New drag & drop functionality allows users to effortlessly attach one or more files directly onto an RFI form. As a result, the attachments are stored directly in the project database, making the files easily accessible without relying on hyperlinks.

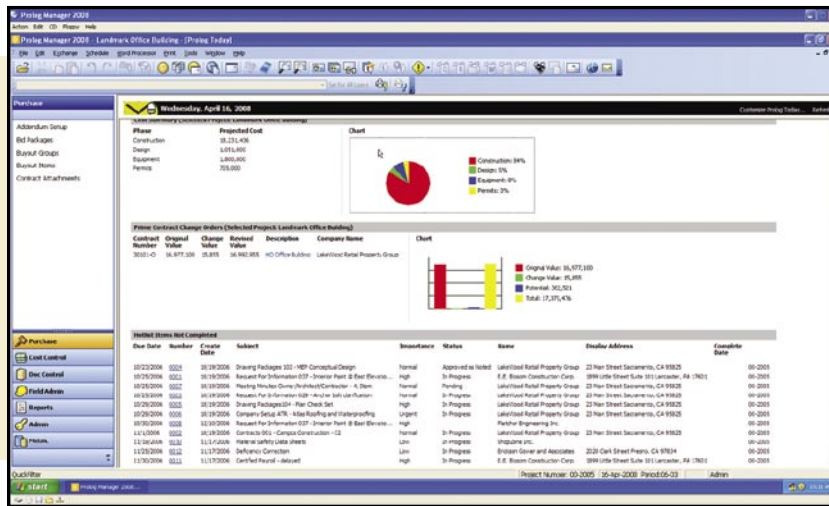
Contract Centric PCOs

Benefit from more detailed cost and budget controls with the added ability to link PCO line items to specific contracts. Then, view the effect PCOs have on specific contracts with new financial summary fields available in Prolog 2008.

Efficient Database Management & Simplified Archiving

The addition of new database types in Prolog 2008 has improved the efficiency of the Prolog Database. The new data types produce smaller sized data tables, reducing space requirements and improving the overall performance of Prolog.

Prolog 2008 also features project archiving enhancements. The Prolog Administrator now has the ability to easily archive projects directly into a SQL Server 2005 database rather than using MS Access. In addition to eliminating the MS Access size limitations, this new option removes the need to import, Prolog can simply attach to an archive database.



◀ The refreshed UI leverages the look and feel of popular desktop productivity applications.

Support for Updated Software Releases

Prolog 2008 has been upgraded to support the latest formats and encryption technology.

- ▶ **Crystal Reports XI** — For greater reporting capability, Prolog Manager and Prolog WebSite now support Crystal Reports XI (version 11) runtime for report viewing.
- ▶ **Master Format 2004** — Support for Master Format 2004, as well as the existing Master Format 1995 is included with Prolog 2008. Users have the ability to choose which format (or both) they wish to use on a project specific basis. Prolog 2008 contains Master Format 2004 CSI codes. Additionally, CSI Codes can now be updated by administrators even if they are already linked to existing records.
- ▶ **Rasterex Version 9** — Prolog WebSite now includes the enhanced view and redline capabilities available in Rasterex Version 9. The Rasterex viewer supports the most common file types, and has native markup, robust redlining and 3D file viewing.
- ▶ **SHA-1 Encryption** — To maintain the highest level of security, Prolog 2008 includes industry standard, SHA-1 encryption protocol making login credentials and project data inaccessible to unauthorized users.

Because our award winning web-based project management solution, ProjectTalk, is based on Prolog, all of the updated features and functionality that is available in Prolog 2008 will also be available in ProjectTalk.

To learn more about Prolog 2008, please visit www.meridiansystems.com or call (800) 850 2660.

1 2008 National Construction-Technology survey, Constructtech Magazine.
2 CFMA's 2008 Information Technology Survey for the Construction Industry, seventh edition.