



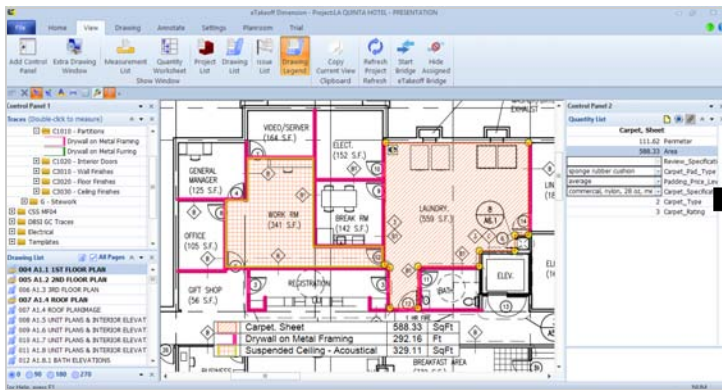
# eTakeoff Dimension

## Integrated Takeoff Software

## Integrated Takeoff and Estimating Increases Productivity by 50%

eTakeoff is electronic takeoff software that works together with Sage Estimating so you never have to manually key takeoff data again. With eTakeoff, you significantly increase accuracy, productivity, and speed over antiquated takeoff methods. It works in 3 simple steps:

1. Takeoff
2. Fine-Tune
3. Send to Estimate



The screenshot shows the Sage Estimating software interface, displaying an estimate spreadsheet. The spreadsheet has columns for 'Assembly', 'Description', 'Takeoff Quantity', 'Labor Price', 'Labor Amount', 'Material Price', 'Material Amount', 'Total Cost/Unit', and 'Total Amount'. The data is organized into rows, with some rows highlighted in yellow. The spreadsheet shows various construction items and their associated costs.

Assembly	Description	Takeoff Quantity	Labor Price	Labor Amount	Material Price	Material Amount	Total Cost/Unit	Total Amount
21011145	Partition - Drywall on Metal Framing	2,527.05 sf		22,238		2,034	10.43 sf	26,473
2	Wall framing studs, non-metal framing, galvanized 3/8" x 20 ga. 16' c/c	2,517.05 sf	1,203.20 sf/line	7,821	0.66 sf	2,515	7.27 sf	9,542
3	Drywall, standard, 5/8" nailed or screwed to walls	5,043.10 sf	1,203.20 sf/line	7,872	0.48 sf	2,688	1.88 sf	10,500
4	Drywall, add for taping and finishing joints, average	5,043.10 sf	1,203.20 sf/line	6,069	0.38 sf	487	1.08 sf	5,552
5	Drywall, add for fire resistant	1,008.62 sf			0.15 sf	760	0.15 sf	760
6	Wall insulation, wall, fiberglass, unfaced, 2" thick, R19	2,527.05 sf	0.39 sf/line	1,727	0.55 sf	1,607	1.10 sf	3,344
7-3028 510	Carpet	500.35 sf		1,207		2,847	5.65 sf	3,053
	Carpet padding, spring rubber cushion, average	68.37 sf	1,203.20 sf/line	367	7.50 sf	490	13.52 sf	884
3030 210	Carpet commercial, nylon 20 oz, medium traffic	68.37 sf	1,203.20 sf/line	174	39.90 sf	2,767	40.29 sf	2,811
	Suspended Ceiling - Acoustical	329.11 sf		1,006		1,333	7.11 sf	2,339
	Acoustical panels, mineral fiber, 3/4" thick, 2' x 2'	329.11 sf	1,203.20 sf/line	585	2.55 sf	839	4.27 sf	1,465
	Ceiling suspension system, 1, 6' x 2' x 2'	329.11 sf	1,203.20 sf/line	440	1.50 sf	491	2.84 sf	1,344

## Key Features

Here's just some of what makes eTakeoff better than the rest:

- Use PDF - no waiting for drawings to convert
- Multiple estimators on the same drawing at the same time
- View multiple drawings while working on takeoff
- Multiple scales on one drawing page
- Database-driven cost information
- Innovative "drill down" from estimate spreadsheet to takeoff source
- BIM integration with industry leaders **Autodesk** and **Assemble Systems**

Leveraging these powerful features, you'll boost estimating capacity while producing faster and more accurate numbers. Plus, you'll be up and running quickly with helpful training tools and software that's easy to use.

## Improve Accuracy and Bid with Confidence Using eTakeoff!

